

*tailored.team*

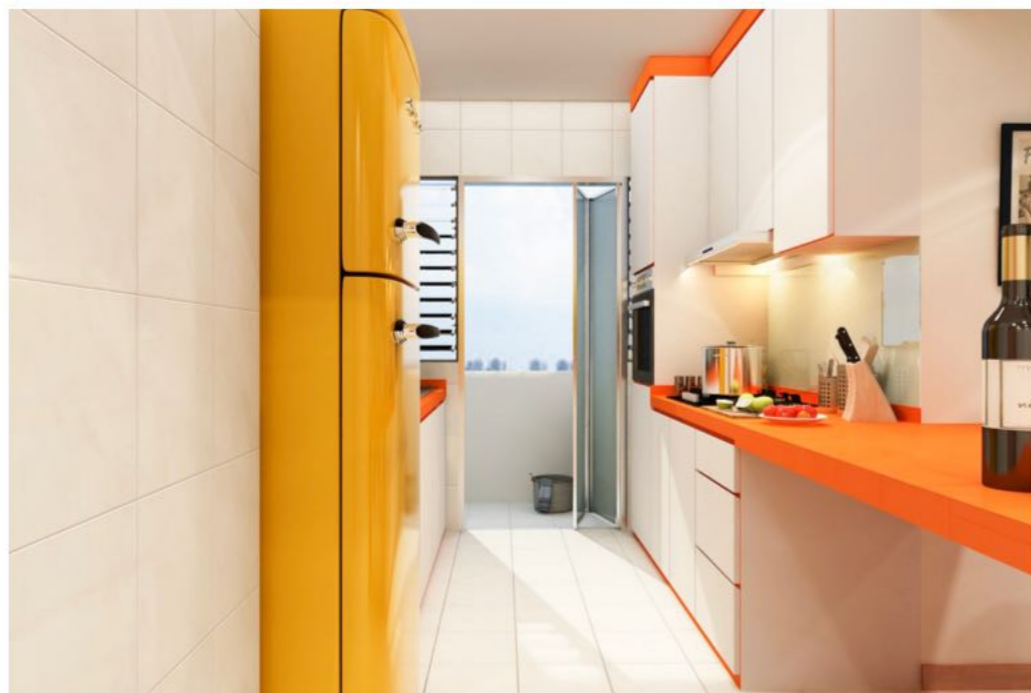
# Virtual Staging Style Guide



# RETRO

'RETRO' is a style that confidently combines an authentic look with the best of today's technologies while remaining appropriately nostalgic.

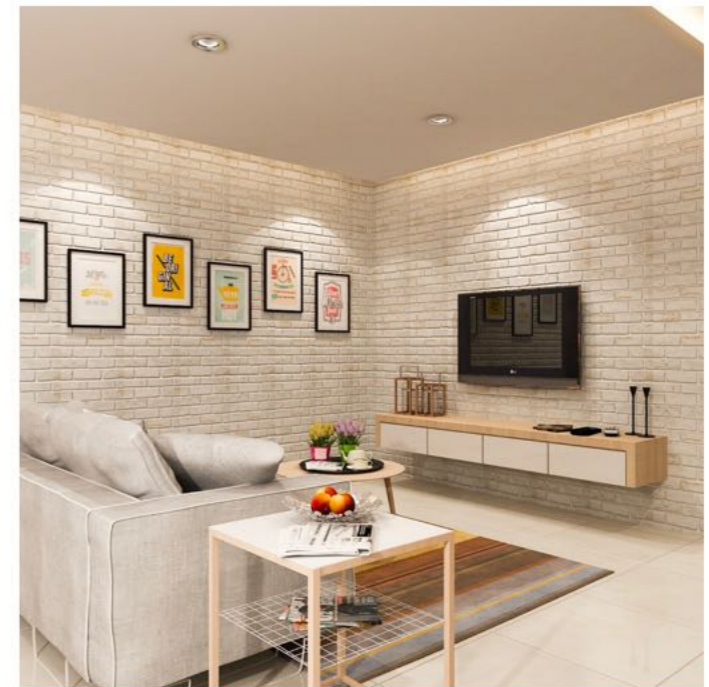
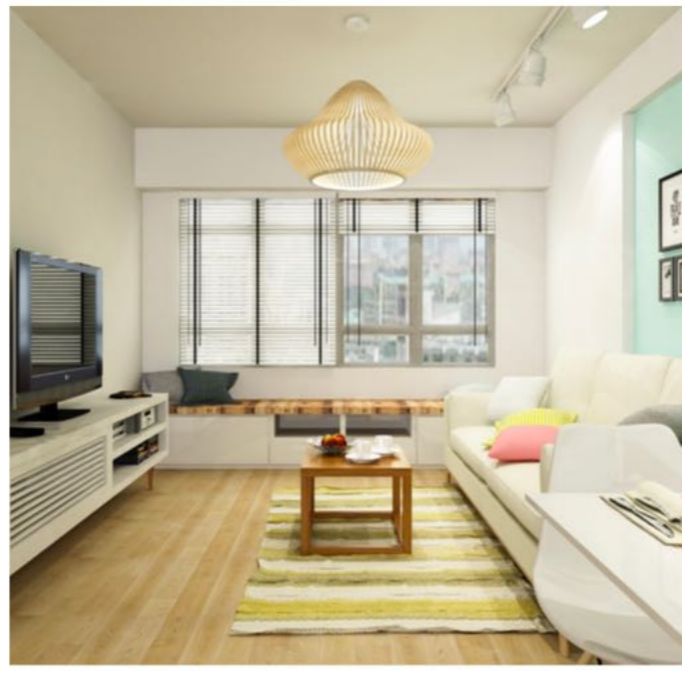
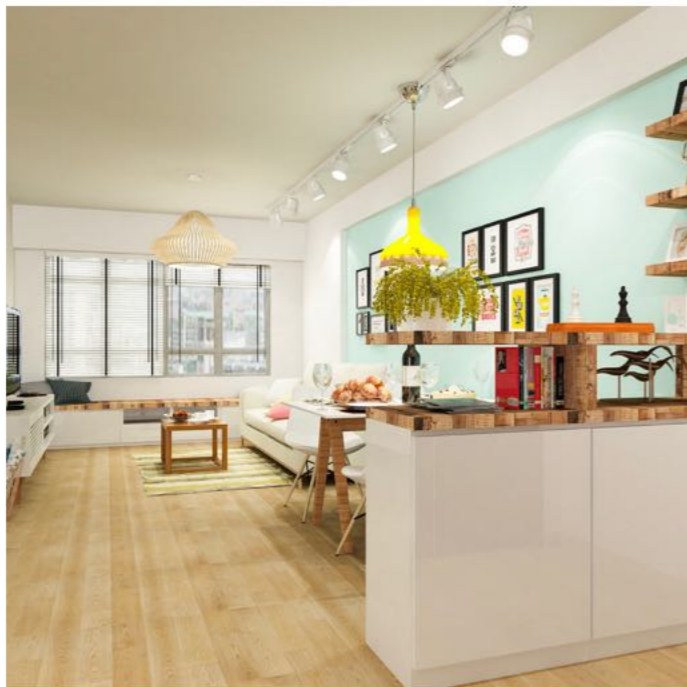






# SCANDINAVIAN

The Scandinavian interior design is characterized by minimalism, simplicity, and functionality. Although the Scandinavian design has been around since the 1950s, it still remains a popular trend in interior design today.

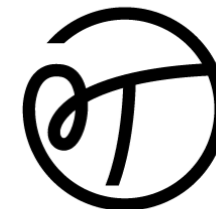






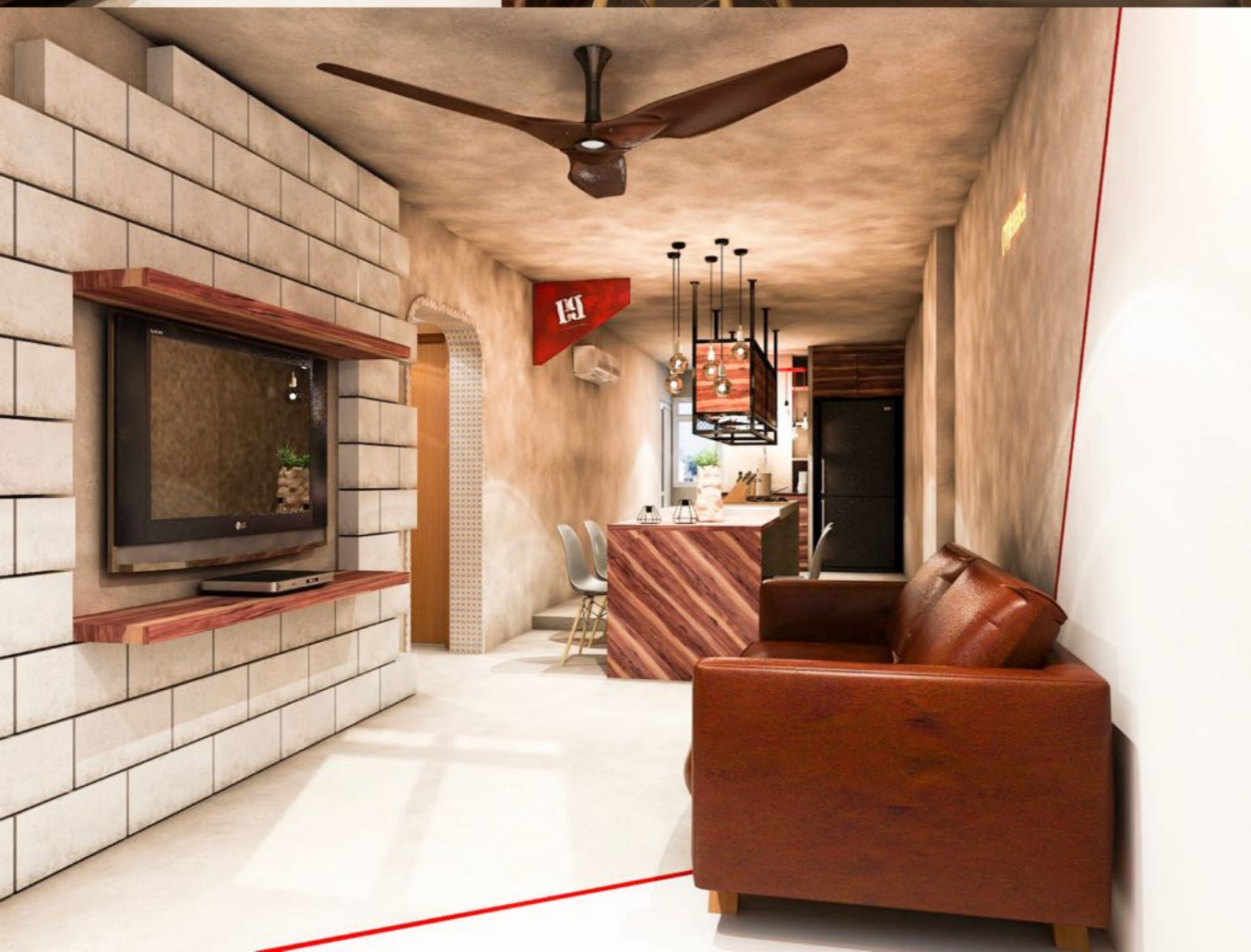






# INDUSTRIAL

It's about proudly displaying the building materials that many try to conceal. It's about adding a raw, unfinished look to the most thoughtfully designed homes. It's about selecting pieces that are as much about function as style.





# CLASSIC

Traditional decorating is calm, orderly, and predictable.  
There is nothing wild or chaotic in a traditional room.









# RESORT

A tropical decor is equally at home with sleek, streamlined modern furnishings or traditional dark wood antiques. The vibrant colors of a tropical color scheme work well with the deepest colors of the outdoors.



# MODERN

Modern is a broad design term that typically refers to a home with clean, crisp lines, a simple colour palette and the use of materials that can include metal, glass and steel.









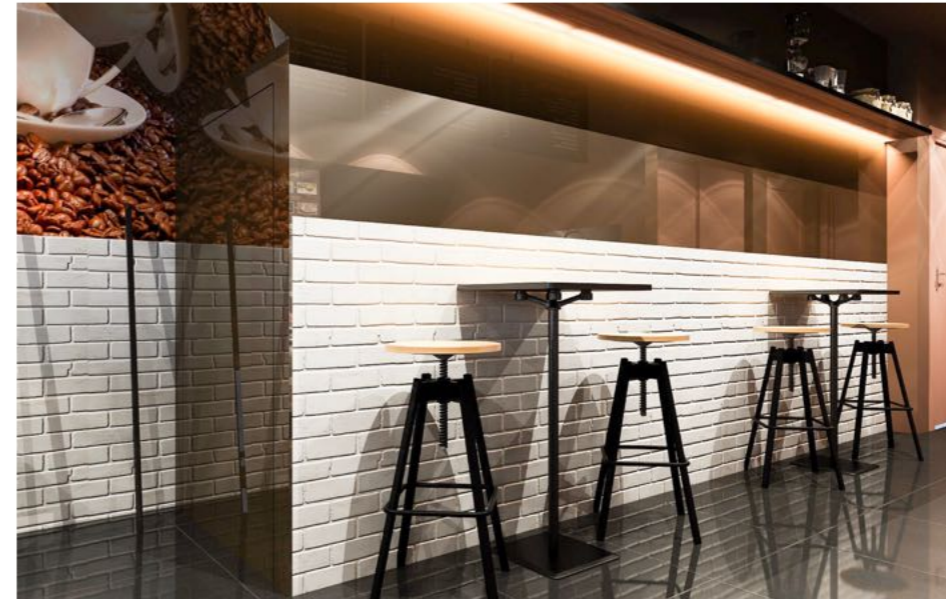




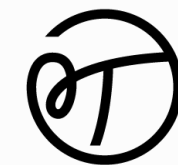




# Coffee Shop







# SPA

www.royalgroup.com

